



**HAMPSTEAD**  
NEIGHBOURHOOD FORUM

## **Appendix 2**

### **Open Spaces, Biodiversity Corridors and Ecological Networks**

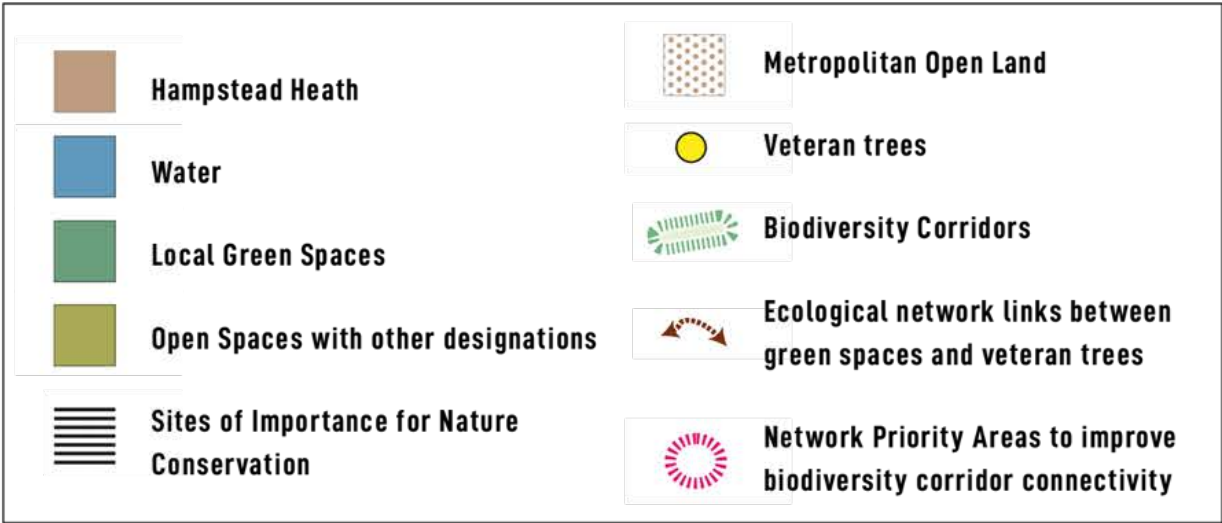
**Hampstead Neighbourhood Plan**

**OPEN SPACE APPENDIX:**  
**Detailed Maps of Key Open Spaces**

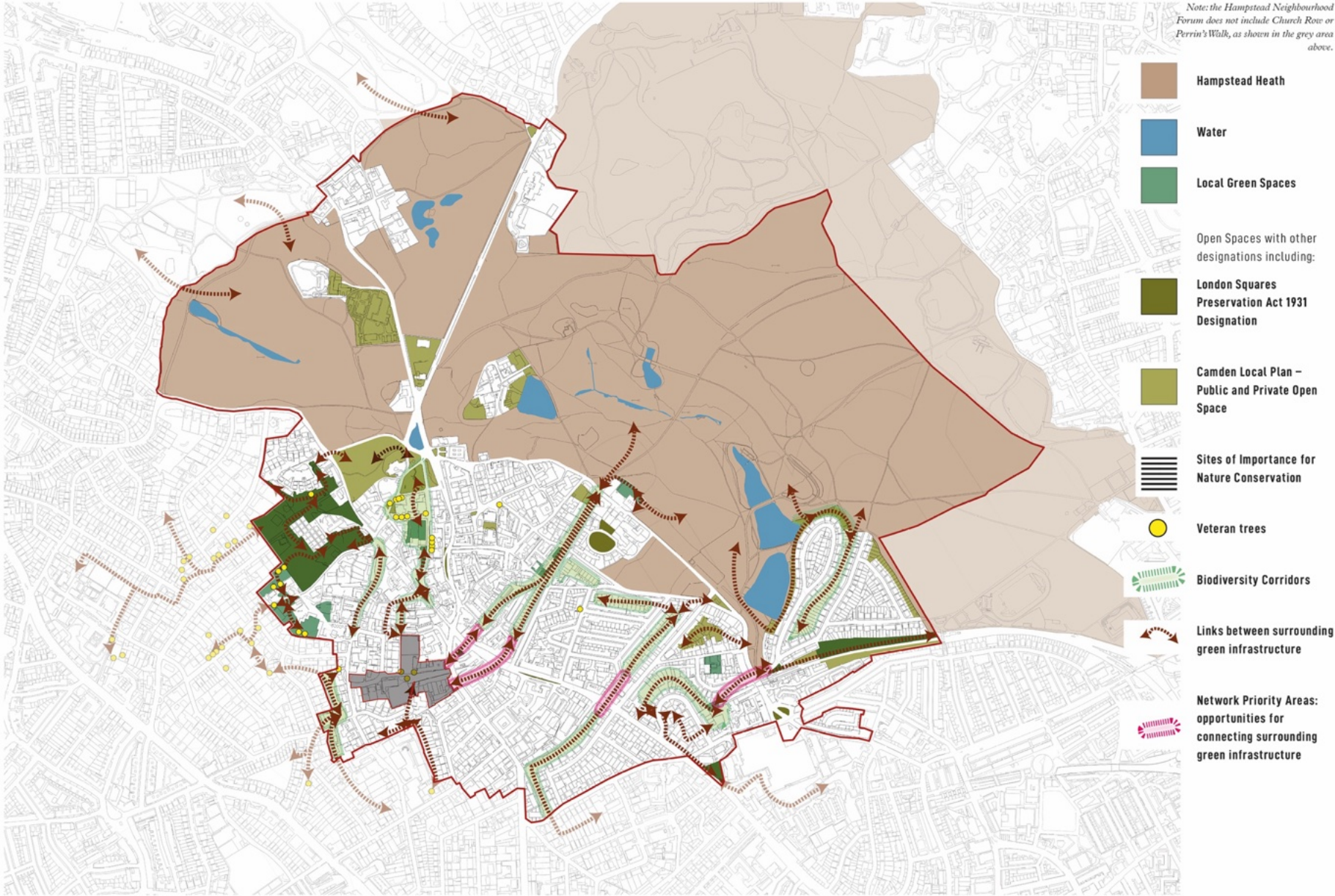
This section illustrates the key open spaces referred to in the Natural Environment section of the Neighbourhood Plan. These maps should be read in conjunction with the table at the end of this section and highlights the following types of spaces:

- Hampstead Heath
- Local Green Spaces (1-14 previously proposed; 15-17 newly)
- Spaces with London Squares Preservation Act 1931 designation (existing)
- Spaces with Camden UDP Private / Public Open Space designation (existing)
- Sites of Importance for Nature Conservation

**KEY**

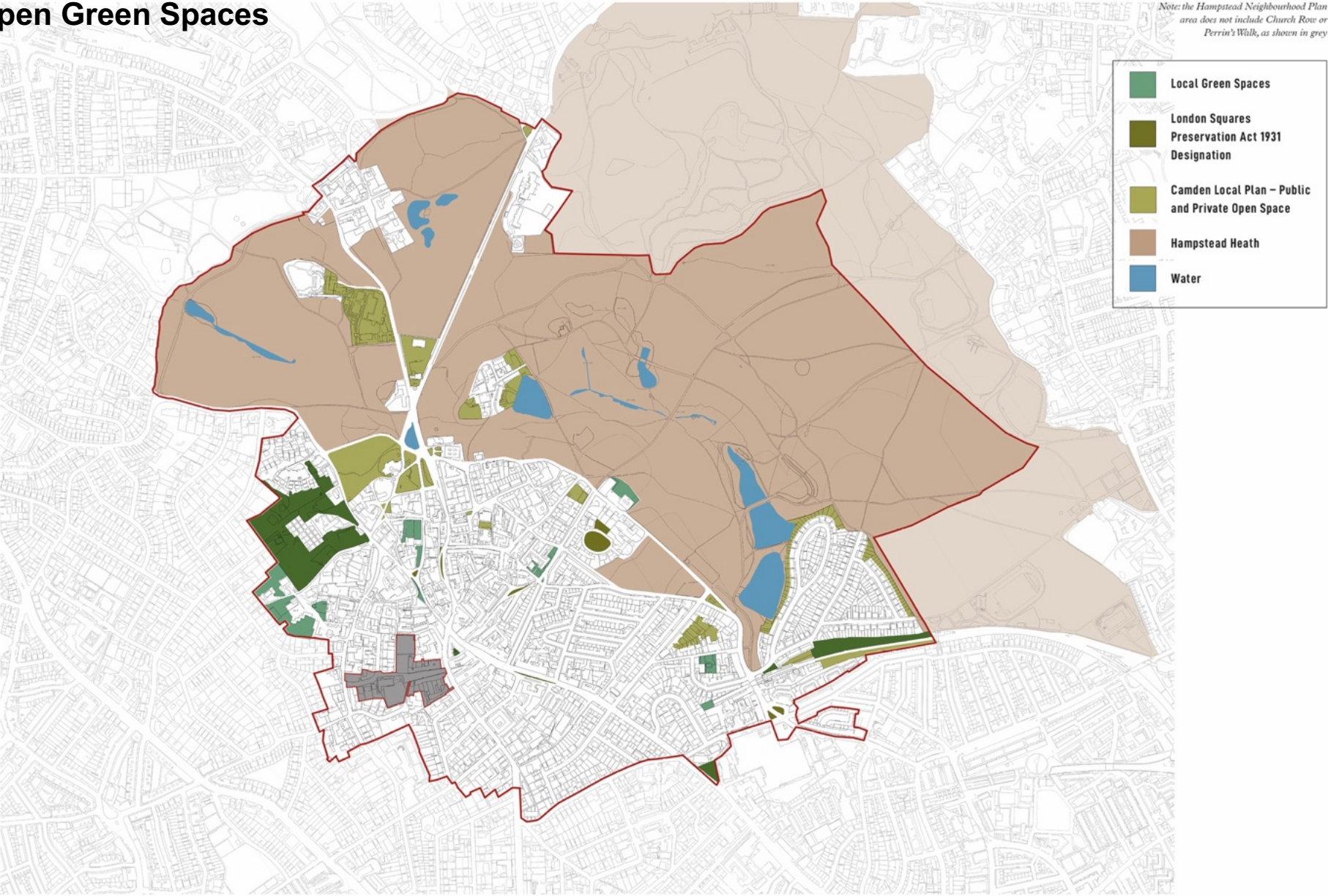


# Ecological Networks and Biodiversity Corridors

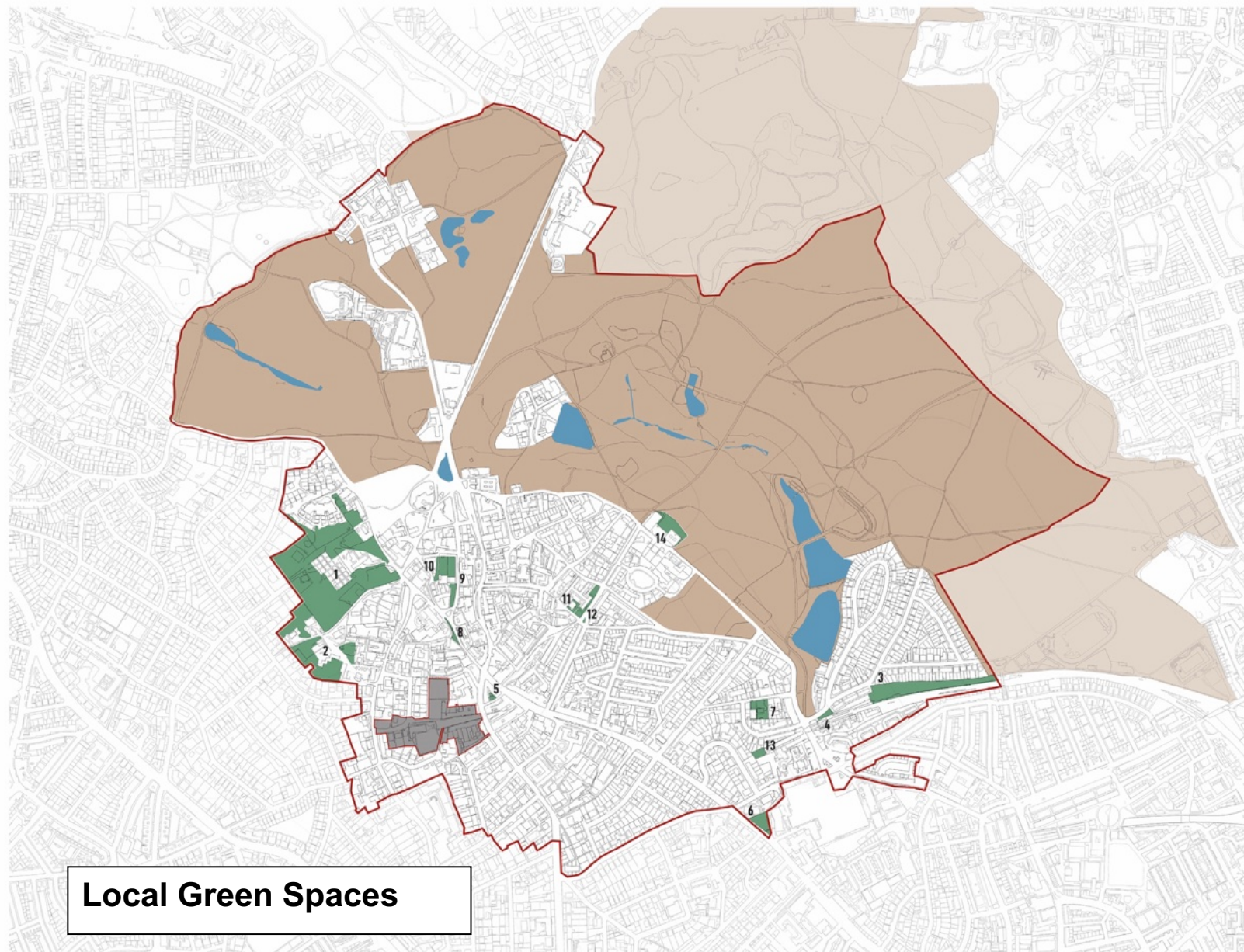


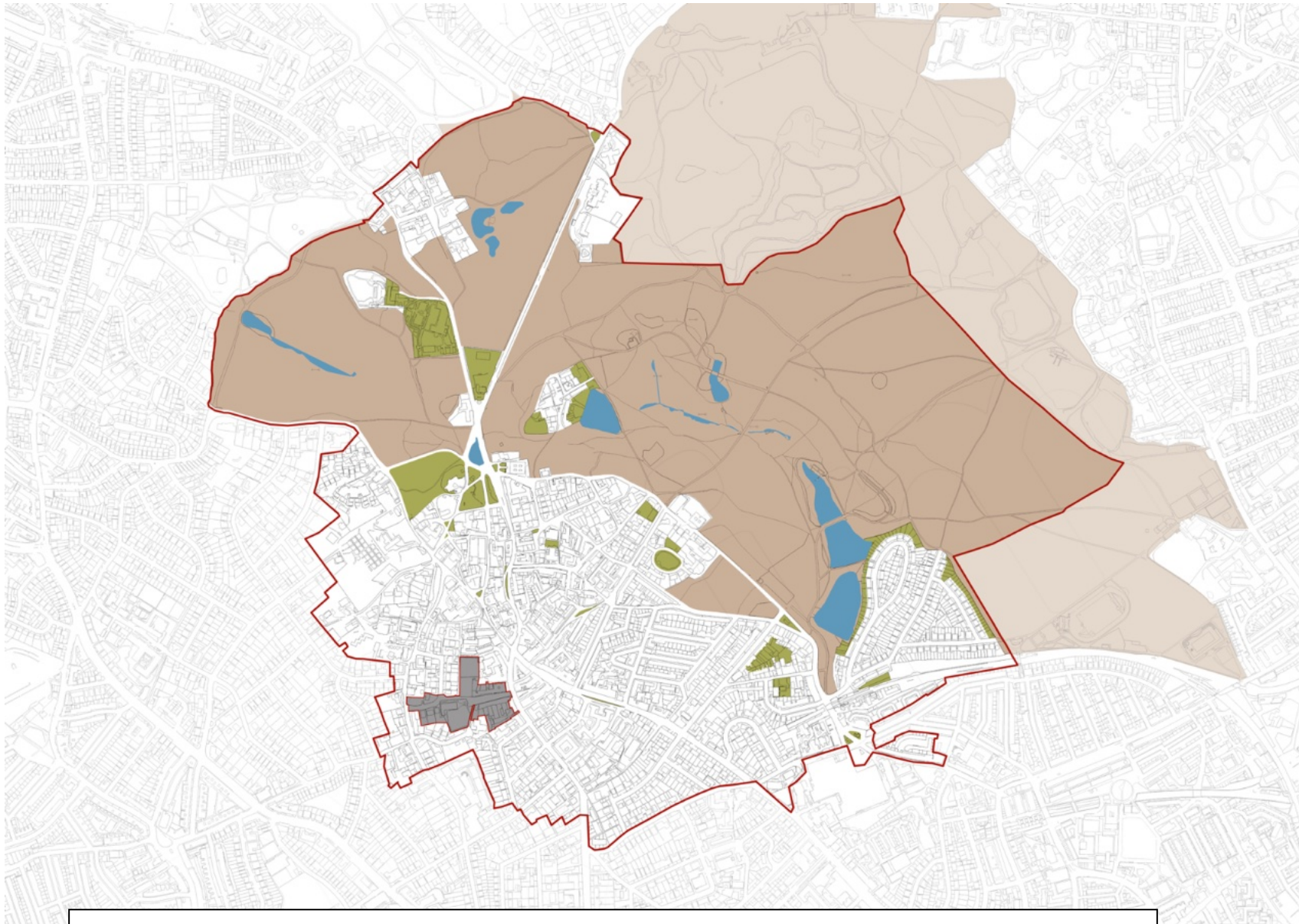


# All Open Green Spaces



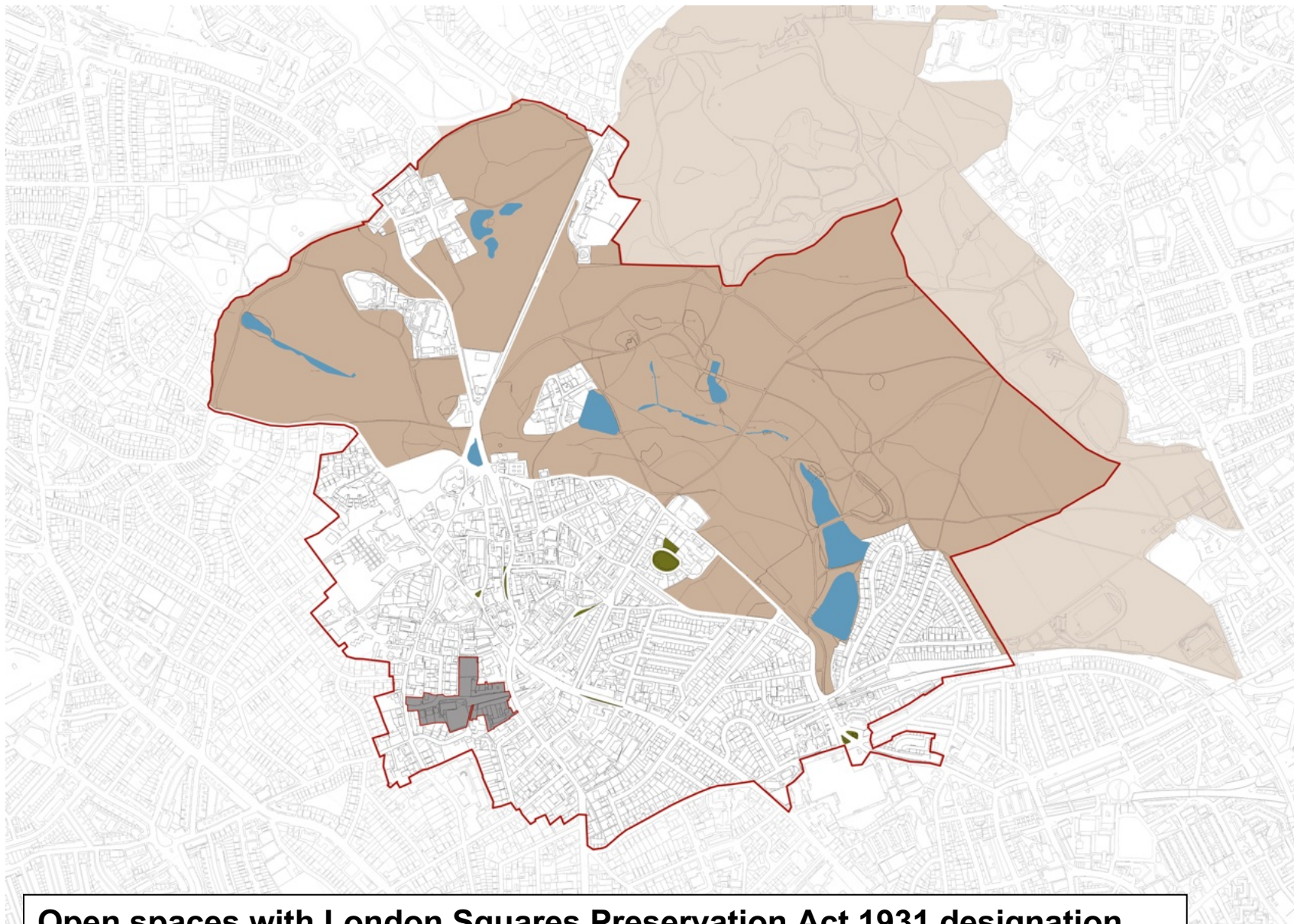




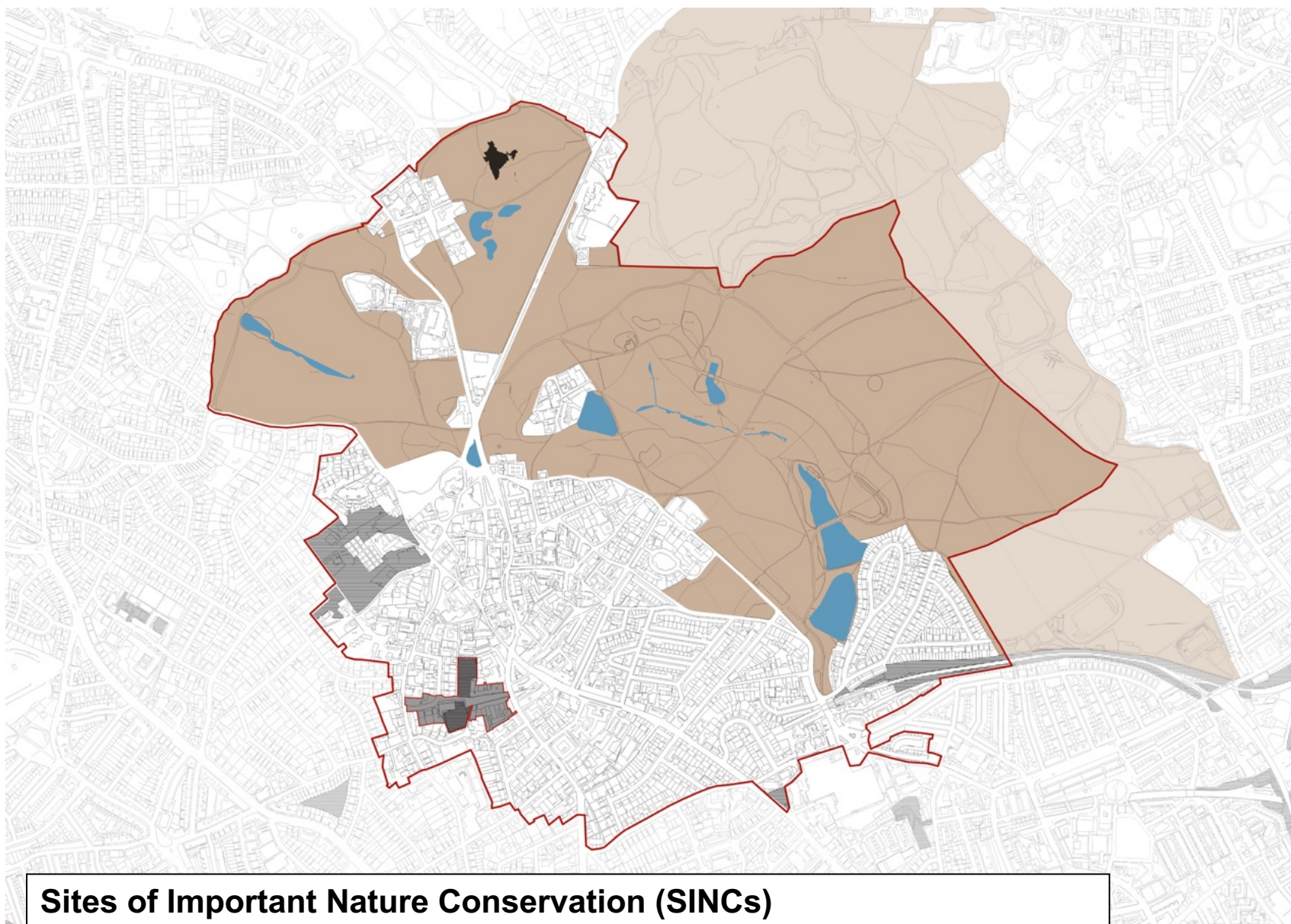


**LB Camden Unitary Development Plan Open Space in Hampstead**

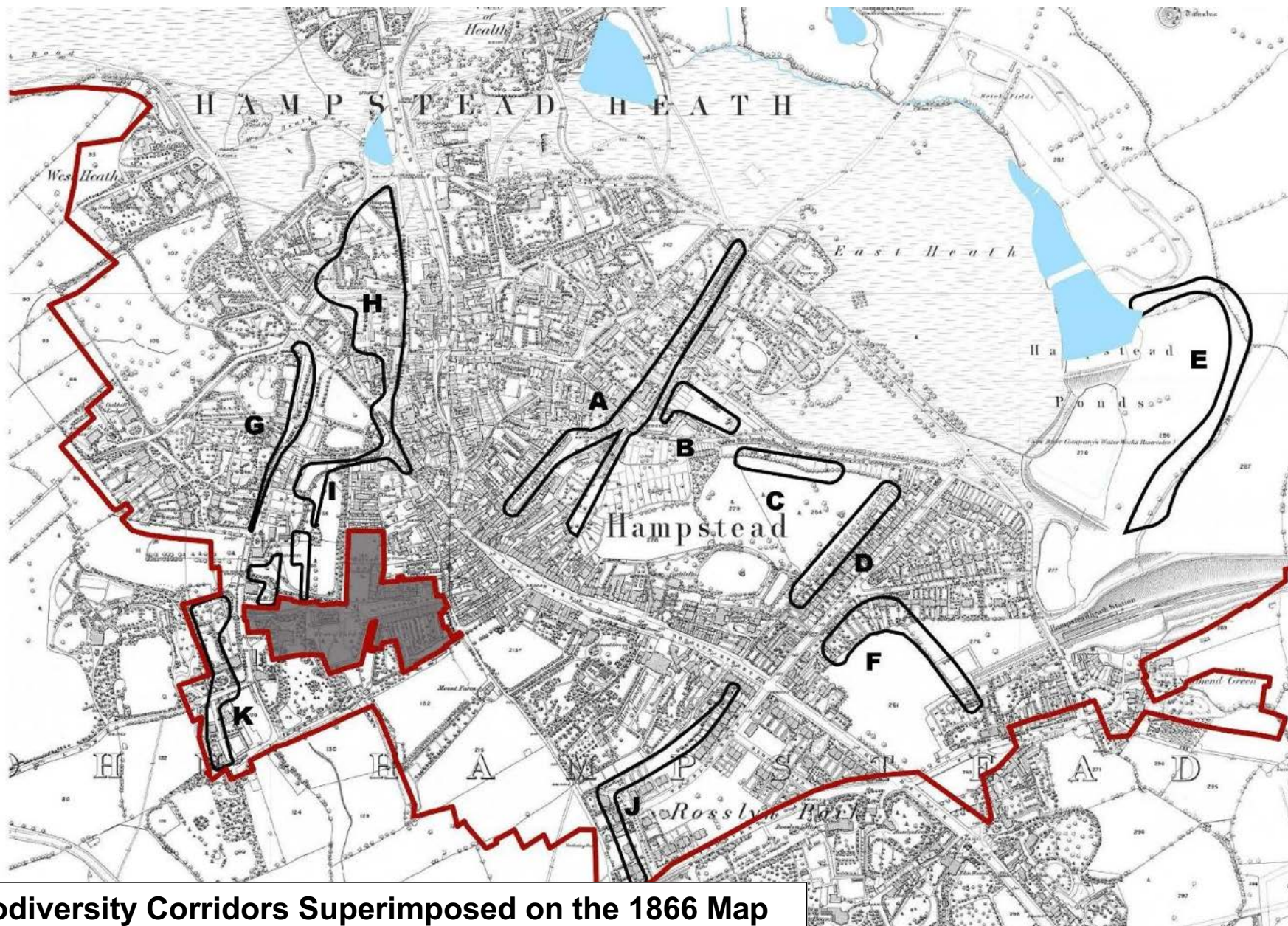




**Open spaces with London Squares Preservation Act 1931 designation**









## Local Green Spaces Detailed Maps



1. Branch Hill House Site of Importance for Nature Conservation and two additional areas







### 3. South End Green and Mansfield (SEGMA) Allotments







5. Oriel Place Garden



6. Hampstead Green



7. Keats House and Garden

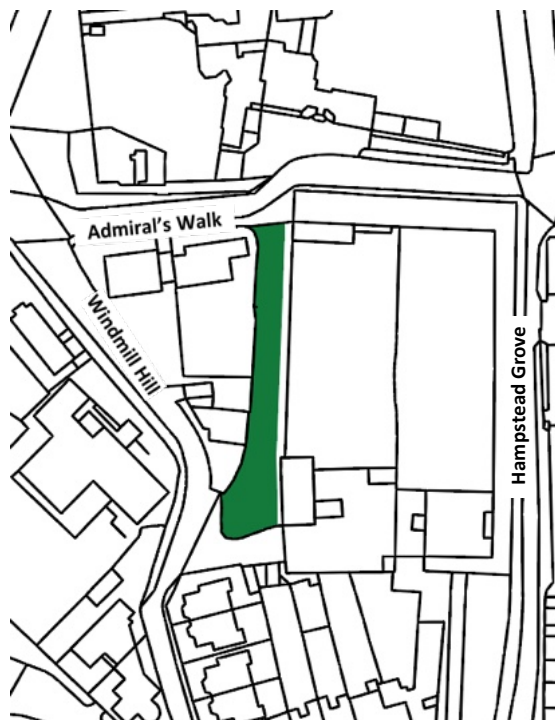


8. Holly Hill Bank

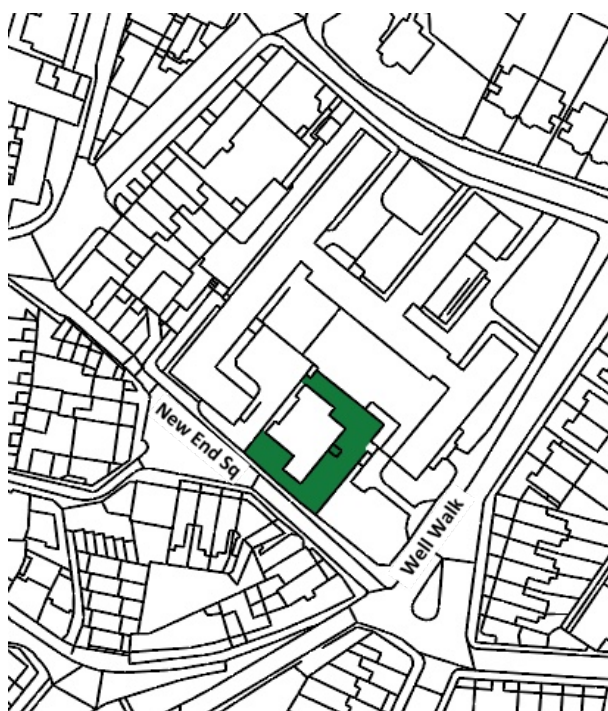




9. Fenton House Gardens



10. Pedestrian Walk – Admirals Walk to Windmill Hill



11. Burgh House Gardens  
House and Gertrude Jekyll's Garden



12. Communal Gardens of Wells



13. Heath Hurst Gardens



14. Garden of The Pryors



	SITE NAME	DESIGNATION
	<b>Metropolitan Open Land (MOL1) within Hampstead Neighbourhood Forum Area</b>	
	Hampstead Heath	50 (part of) in Camden schedule of Open Spaces plus: part of Ken Wood Ancient Woodland (65) part of Hampstead Heath Woods (51); SINC M072
	Garden of Heath House	180 in Camden schedule of Open Spaces; SINC M072
	Garden of Summit Lodge	181 in Camden schedule of Open Spaces; SINC M072
	Gardens adjacent to Hampstead Ponds & South Fairground Site, Vale of Health	182 in Camden schedule of Open Spaces; SINC M072
	Inverforth House/The Hill	215 in Camden schedule of Open Spaces; SINC M072
	Manor Cottage garden, Greenmoor and Fleet House, Vale of Health	224 in Camden schedule of Open Spaces; SINC M072
	North Fairground Site, Vale of Health	235 in Camden schedule of Open Spaces; SINC M072
	Terrace Reservoir	275 in Camden schedule of Open Spaces; SINC M072
	The Elms, Spaniards End	277 in Camden schedule of Open Spaces; SINC M072
	<b>Sites of Importance for Nature Conservation</b>	<b>Apart from Hampstead Heath, these will be made LGSs to give them some statutory protection. There will be some expansion to include related, unprotected areas.</b>
	Hampstead Heath	SINC M072; MOL
	Branch Hill	SINC CaB102
	Gospel Oak Rail sides	SINC CaB104
	SEGMA allotments	SINC CaB104
	World Peace Garden South Hill Park	SINC CaB104
	Hampstead Green	SINC CaL17
	<b>London Squares Preservation Act 1931</b>	<b>These will not be made LGSs as they already have statutory protection (1931); up-dated as village greens in the Commons Registration Act 1965, the Countryside and Rights of Way Act 2000, and the Commons Act 2006.</b>
	Heath Street/The Mount Shrubbery	55 in Camden schedule of Open Spaces; also Public Open Land, unrestricted access
	High Street Shrubbery/Greenhill	56 in Camden schedule of Open Spaces; also Public Open Land, unrestricted access
	Holly Bush Hill Green	60 in Camden schedule of Open Spaces; also Public Open Land, unrestricted access
	South End Green	100 in Camden Schedule of Open Spaces
	The Green, Flask Walk	41 in Camden schedule of Open Spaces. Hampstead's original green now denuded.
	Gainsborough Gardens and East of 4 Gainsborough Gardens	176 in Camden schedule of Open Spaces.

Local Green Spaces		
1	Branch Hill House Gardens and Wood, Oak Hill Wood, Branch Hill Allotments and two additional areas	145, 146, 147 and 148 in Camden schedule of Open Spaces and two additional areas
2	Oak Hill Park Spaces	Private estate
3	South End Green and Mansfield Allotments	249 in Camden schedule of Open Spaces, Private, Allotment, SINC CaBI04
4	World Peace Garden South Hill Park	243 in Camden schedule of Open Spaces, Private
5	Oriel Place Garden	239 in Camden schedule of Open Spaces, Private
6	Hampstead Green	49 in Camden schedule of Open Spaces, Public
7	Keats House and Garden	218 in Camden schedule of Open Spaces; No. 1120 Parks & Gardens of Special Historic Interest
8	Holly Bush Hill	Owned by LB Camden
9	Fenton House Gardens	[Grade 1 Listed house, number 1378648; owned by National Trust]
10	Pedestrian walk Admirals Walk to Windmill Hill	Privately owned, Public Right of Way
11	Burgh House gardens	Owned by LB Camden
12	Communal gardens of Wells House and Gertrude Jekyll's garden, Well Walk	Owned by LB Camden
13	Heath Hurst Gardens	Private leased land
14	The Pryors	Private residences
Biodiversity Corridors		
A	Well and Flask Walks + rear Gayton Road	From East Heath Rd along NW side of Well Walk & Flask Walk up to Back Lane with branch along rear gardens NW Gayton Rd
B	Rear gardens SW Christchurch Hill	Rear gardens SW Christchurch Hill from Nos 5 to 41, including old orchard.
C	Rear gardens Denning and Willow Roads	Rear gardens along boundary between Denning Road and Willow Road
D	Rear gardens Downshire Hill and Pilgrims Lane	Rear gardens between Downshire Hill north and Pilgrims Lane south
E	Rear gardens Parliament Hill & South Hill Park	Rear gardens between Parliament Hill & South Hill Park, continuing around top of South Hill Park
F	Rear gardens Hampstead Hill Gardens	Entire length of Northern rear gardens of Hampstead Hill Gardens from Pond Street to Rosslyn Hill
G	West side of Frognal	Private 'shrubbery' western side of Frognal Nos 115-99, continuing down western side of Frognal to join to Oak Hill Park GC.



<b>H</b>	Lower Terrace & Hampstead Grove	Eastern side of Lower Terrace from West Heath Road to Windmill Hill and Admirals Walk and western side of Hampstead Grove.
<b>I</b>	Holly Hill to Holly Walk	Joining St John's Churchyard to Holly Hill and Frognal

<b>K</b>	South side of Oak Hill Park towards St John's Churchyard	Southern part of Oak Hill Park, joining up with western side of Frognal + to St John's Churchyard via 88&90 Frognal
<b>J</b>	Spring Walk/Thurlow Road then Lyndhurst Terrace to Fitzjohns/Daleham	Rear gardens of length of NW Thurlow Road, continuing down western gardens of Lyndhurst Terrace, then between rear gardens of Daleham Gardens and Fitzjohns Avenue
<b>K</b>	Frognal Lane to western Frognal rear gardens to link with a green corridor from RedFrog	Rear gardens of 1-19 Redington Road, 67-61 Frognal and 23 Frognal Lane then across Frognal Lane to gardens of west side of Frognal and East side of Langland Gardens to edge of Forum boundary.
<b>Private Open Space</b>		
	Branch Hill Site 1	145 in Camden Schedule of Open Spaces; SINC CaBI02
	Branch Hill Site 2	146 in Camden Schedule of Open Spaces; Allotment, SINC CaBI02
	Branch Hill Site 3	147 in Camden Schedule of Open Spaces; SINC CaBI02
	Branch Hill Site 4	148 in Camden Schedule of Open Spaces; SINC CaBI02
	Christchurch Passage Open Space	157 in Camden Schedule of Open Spaces
	East Heath Open Space	165 in Camden Schedule of Open Spaces
	Gainsborough Gardens	176 in Camden Schedule of Open Spaces; LS
	Garden of 21A Heath Street	177 in Camden Schedule of Open Spaces
	Garden of Heath House	180 in Camden Schedule of Open Spaces; MOL1
	Garden of Summit Lodge	181 in Camden Schedule of Open Spaces; MOL1
	Gardens adjacent to Hampstead Ponds	182 in Camden Schedule of Open Spaces; MOL1
	Hampstead Square Gardens	205 in Camden Schedule of Open Spaces
	Heath-Edge Gardens, Parliament Hill	207 in Camden Schedule of Open Spaces
	Inverforth House The Hill	215 in Camden Schedule of Open Spaces; PAOLI; No. 1153 Parks & Gardens of Special Historic Interest
	Keats & Downshire Gardens	217 in Camden Schedule of Open Spaces;
	Keats' House Grounds	218 in Camden Schedule of Open Spaces; No. 1120 Parks & Gardens of Special Historic Interest
	Manor Cottage Garden, Vale of Health	224 in Camden Schedule of Open Spaces; MOL1
	North Fairground Site, Vale of Health	235 in Camden Schedule of Open Spaces; SINC M072; MOL
	Oriel Place Garden	239 in Camden Schedule of Open Spaces
	Parliament Court Gardens	242 in Camden Schedule of Open Spaces
	Peace Garden	243 in Camden Schedule of Open Spaces; SINC CaBI04
	Railway Embankments, Hampstead Heath	249 in Camden Schedule of Open Spaces; Allotment, SINC CaBI04
	Spedan Close Gardens	269 in Camden Schedule of Open Spaces; SINC CaBI02
	Terrace Reservoir	275 in Camden Schedule of Open Spaces; MCIL1
	The Elms, Spaniards End	277 in Camden Schedule of Open Spaces; MDL1



	<b>Public Open Space</b>	
	Bell Moor	7 in Camden schedule of Open Spaces
	Flask Walk	41 in Camden schedule of Open Spaces; LS
	Hampstead Green	49 in Camden Schedule of Open Spaces
	Hampstead Heath (part of)	50 in Camden schedule of Open Spaces; MOL1; SINC (M)
	Heath Street Shrubbery	55 in Camden schedule of Open Spaces; LS
	High Street Shrubbery	56 in Camden schedule of Open Spaces; LS
	Holly Bush Hill	60 in Camden schedule of Open Spaces; LS
	South End Green	100 in Camden schedule of Open Spaces; LS
	South End Triangle	101 in Camden schedule of Open Spaces
	South Grove Square	102 in Camden schedule of Open Spaces; LS
	Spaniards End	103 in Camden schedule of Open Spaces
	Windmill Hill Enclosures	127 in Camden schedule of Open Spaces
	Christchurch Passage	157 in Camden Schedule of Open Spaces
	East Heath Open Space	165 in Camden Schedule of Open Spaces
	Hampstead Square Gardens	205 in Camden Schedule of Open Spaces
	Heath-Edge Gardens, Parliament Hill	207 in Camden Schedule of Open Spaces
	Keats & Downshire Gardens	217 in Camden Schedule of Open Spaces
	Keats House and Garden	218 in Camden Schedule of Open Spaces; No. 1120 Garden of Special Historic Interest.
	Parliament Court Gardens	242 in Camden Schedule of Open Spaces
	Upper Terrace Reservoir	275 in Camden Schedule of Open Spaces; MOL