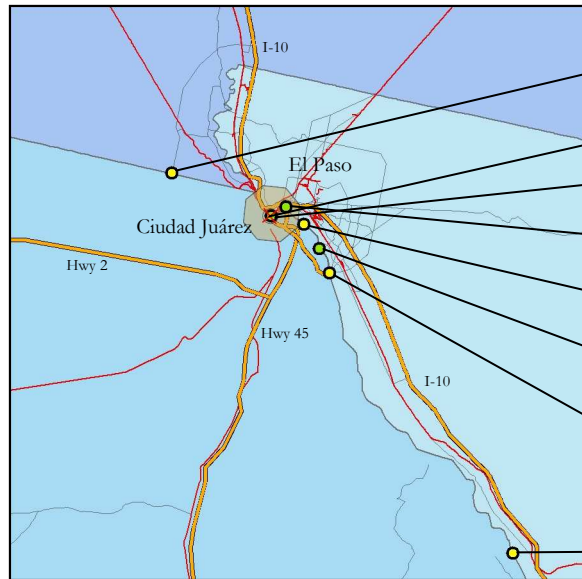


Inset A — El Paso Region

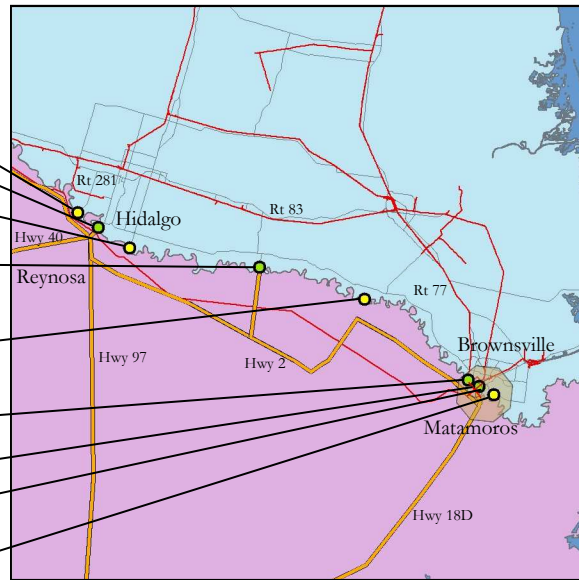


- Santa Teresa (Pete V Domenici Blvd) F**
San Jerónimo (Carretera Samalayuca-el Oasis)
- Union Pacific Railway (two spans)
- (S Santa Fe St) Paso Del Norte Int'l Bridge **S**
(Avenida Benito Juárez)
- (US Rt 85) Good Neighbor Int'l Bridge **S**
(Avenida Lerdo)
- (I-110) Bridge of the Americas **F**
(Avenida Abraham Lincoln)
- (S Zaragoza Rd) Ysleta-Zaragoza Int'l Bridge **F S**
(Avenida Zaragoza)
- (Ranch Rd 1109) Fabens Caseta Int'l Bridge
(Avenida Cruz Rey)
- (FM 1088) Fort Hancock
(Porvenir)



Fabens

Inset B — Brownsville Region



- Hidalgo**
- S** Anzalduas Int'l Bridge (Stewart Rd)
- S** McAllen-Hidalgo-Reynosa Int'l Bridge (US Rt 281 Spur)
(Periférico Luis Echeverría)
- F** Pharr-Reynosa Int'l Bridge (US Rt 281)
(Al Puente de Pharr)
- Progreso (FM 1015)**
Nuevo Progreso (Benito Juárez)
- Brownsville**
- F** Free Trade Bridge (County Rd 509)
(Carretera a Banco los Indios)
- Brownsville & Matamoros Int'l Bridge (Mexico Blvd)
(Las Americas)
- Union Pacific Railway
- Gateway Int'l Bridge (International Blvd)
(Alvaro Obregón)
- F S** Veterans Int'l Bridge (US Rt 77)
(Cinco de Mayo)

* Austin Rose is a graduate student in the geography program at WWU's Huxley College of the Environment. David Davidson is Associate Director of the BPRI.

Resources Describing Land Ports-of-Entry

USCBP website providing information about each POE:

<http://www.cbp.gov/xp/cgov/toolbox/contacts/ports/>

U.S. Bureau of Transportation Statistics — Transborder Surface Freight Database, containing time series trade data at the POE level (with reference to USCBP's 26 master POE names):

<http://www.bts.gov/transborder/>

U.S. Bureau of Transportation Statistics — Time series record of cross-border traffic volume at the POE level, based upon USCBP data (with reference to USCBP's 26 master POE names):

<http://www.transtats.bts.gov/BorderCrossing.aspx>



BORDER POLICY BRIEF | Fall 2010

Atlas of the Land Entry Ports on the U.S. – Mexico Border

Volume 5, No. 4 Fall 2010

by Austin Rose & David Davidson*

Web Address: www.wvu.edu/bpri

Connectivity of Abutting Jurisdictions: # of Crossings & Share of Overall Car Traffic

American jurisdiction	# of auto crossings	% of cross-border car traffic	Mexican jurisdiction
CA	7	37.8	BCN
AZ	7	10.5	SON
NM	3	1.1	CHIH
	7	16.7	
TX	4	6.2	COAH
	1	*	NL
	15	27.7	TAMPS
	44	100.0	

* Stand-alone data unavailable for the TX/NL crossing — data bundled with neighboring POE.

This atlas shows the names and locations of all legal land crossing points along the U.S. – Mexico border. Each depicted point is one at which a vehicle can travel by road (or railroad) from U.S. to Mexican soil. There are 52 in all, of which 8 are rail lines, 43 are roadways (24 bridges, 2 dams, and 17 roads), and 1 is a ferry. For record-keeping purposes, USCBP groups the 52 crossings into 26 ports-of-entry (POEs), with data from a set of neighboring crossings aggregated under the name of a “master” POE.

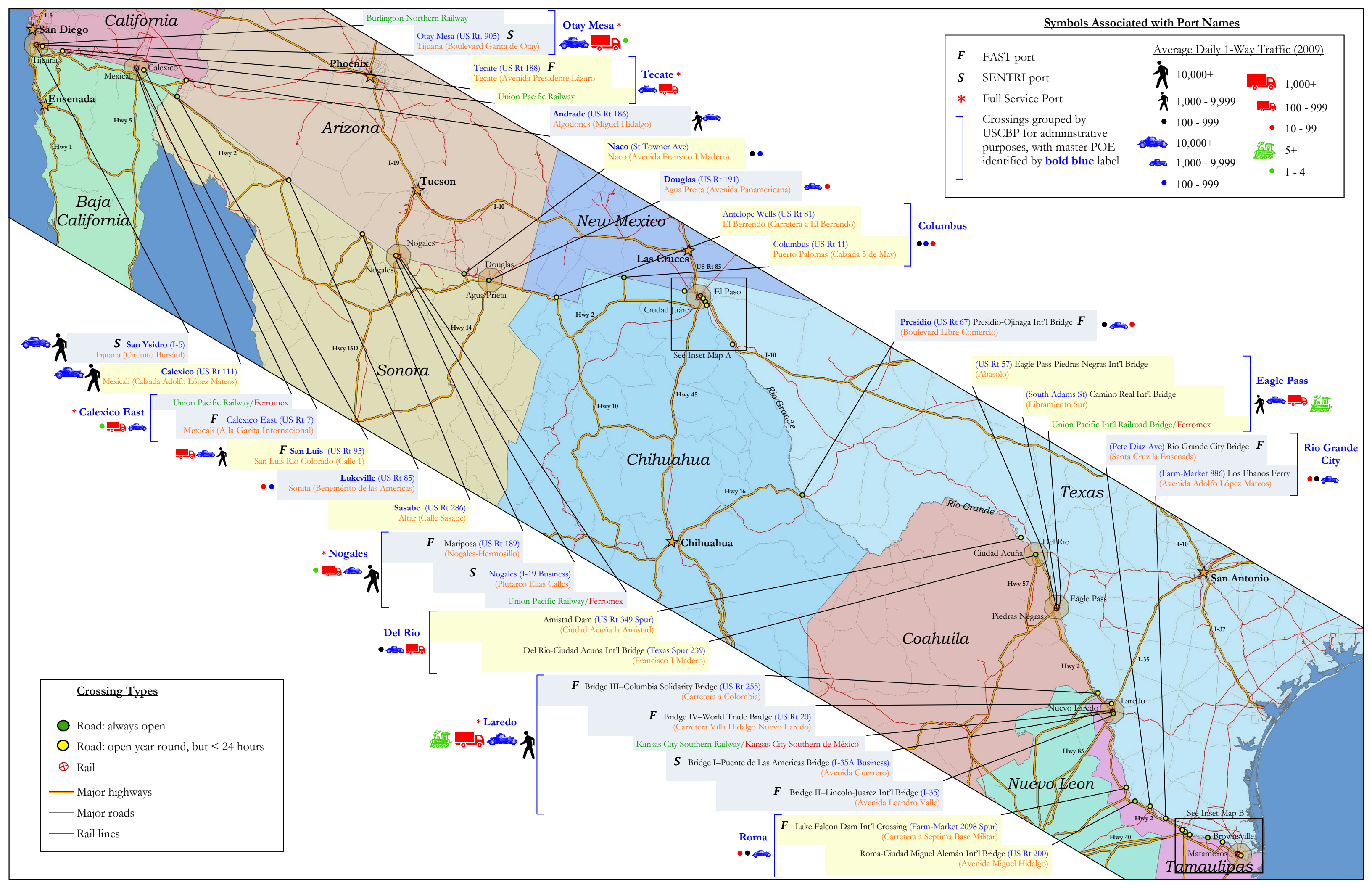
Aside from showing the locations and names of crossings, the atlas presents information about traffic activity. Symbols adjacent to each POE's label indicate what volume of daily one-way traffic (pedestrians, cars, trucks, and trains separately) passes through the POE, based upon USCBP data for the year 2009.

This atlas is a companion to the Canadian border atlas we published in early 2010 (*Border Policy Brief* Vol. 5, No. 1, retrievable at www.wvu.edu/bpri), and the tables on this page correspond to ones in the Canadian atlas. A methodological difference hinders direct comparability of the bottom table,¹ but one fact is nevertheless evident: lightly-used crossings are relatively rare along the Mexican border (e.g., while there are 50 crossings on the Canadian border that handle fewer than 100 cars per day, just 1 such POE exists on the Mexican border). In general, automobile traffic volumes at the Mexican border are over twice as great as those at the Canadian, and pedestrian traffic at the Canadian border is insignificant in relation to that found at the Mexican border.

1. For the Canadian atlas, traffic data was available for individual crossings, whereas this atlas uses data aggregated at the level of USCBP's 26 master POEs.

Distribution of Traffic Volume across POEs

POE categories (range of avg. daily traffic flow)	Trucks				Cars				Pedestrians			
	1,000 +	100 - 999	10 - 99	0 - 9	10,000 +	1,000 - 9,999	100 - 999	0 - 99	10,000 +	1,000 - 9,999	100 - 999	0 - 99
# of POEs in category	4	9	5	8	7	14	3	1	5	9	9	3
Avg. per POE per day	2,144	330	41	1	19,559	3,792	846	77	14,169	4,395	299	32
Share of total traffic handled by category	73%	25%	2%	0%	71%	28%	1%	0%	63%	35%	2%	0%



Symbols Associated with Port Names

F	FAST port		10,000+		1,000+
S	SENTRI port		1,000 - 9,999		100 - 999
*	Full Service Port		100 - 999		10 - 99
Crossings grouped by USCBP for administrative purposes, with master POE identified by bold blue label			10,000+		5+
			1,000 - 9,999		1 - 4
			100 - 999		

Crossing Types

- Road: always open
- Road: open year round, but < 24 hours
- Rail
- Major highways
- Major roads
- Rail lines

S San Ysidro (I-5)
Tijuana (Circuito Bursátil)

Calexico (US Rt 111)
Mexicali (Calzada Adolfo López Mateos)

*** Calexico East**

F Calexico East (US Rt 7)
Mexicali (A la Garita Internacional)

F San Luis (US Rt 95)
San Luis Rio Colorado (Calle 1)

Lukeville (US Rt 85)
Sonita (Benemérito de las Americas)

Sasabe (US Rt 286)
Altar (Calle Sasabe)

*** Nogales**

F Mariposa (US Rt 189)
Nogales-Hermosillo

S Nogales (I-19 Business)
Plutarco Elias Calles

Del Rio

F Amistad Dam (US Rt 349 Spur)
Ciudad Acuña la Amistad

Del Rio-Ciudad Acuña Int'l Bridge (Texas Spur 239)
Francisco I Madero

F Bridge III-Columbia Solidarity Bridge (US Rt 255)
Carretera a Colombia

F Bridge IV-World Trade Bridge (US Rt 20)
Carretera Villa Hidalgo Nuevo Laredo

*** Laredo**

S Bridge I-Puente de Las Americas Bridge (I-35A Business)
Avenida Guerrero

F Bridge II-Lincoln-Juarez Int'l Bridge (I-35)
Avenida Leandro Valle

Roma

F Lake Falcon Dam Int'l Crossing (Farm-Market 2098 Spur)
Carretera a Septima Base Militar

Roma-Ciudad Miguel Alemán Int'l Bridge (US Rt 200)
Avenida Miguel Hidalgo

Presidio (US Rt 67) Presidio-Ojinaga Int'l Bridge **F**
(Boulevard Libre Comercio)

Columbus

Antelope Wells (US Rt 81)
El Berrendo (Carretera a El Berrendo)

Columbus (US Rt 11)
Puerto Palomas (Calzada 5 de May)

Douglas (US Rt 191)
Agua Prieta (Avenida Panamericana)

Naco (St Towner Ave)
Naco (Avenida Francisco I Madero)

Andrade (US Rt 186)
Algodones (Miguel Hidalgo)

Tecate *

Tecate (US Rt 188)
Tecate (Avenida Presidente Lázaro)

Otay Mesa *

Otay Mesa (US Rt. 905)
Tijuana (Boulevard Garita de Otay)

(US Rt 57) Eagle Pass-Piedras Negras Int'l Bridge
(Abasolo)

(South Adams St) Camino Real Int'l Bridge
(Libramiento Sur)

Union Pacific Int'l Railroad Bridge/Ferromex

(Pete Diaz Ave) Rio Grande City Bridge **F**
(Santa Cruz la Ensenada)

(Farm-Market 886) Los Ebanos Ferry
(Avenida Adolfo López Mateos)

Eagle Pass

Rio Grande City

See Inset Map B

Brownsville

Matamoros